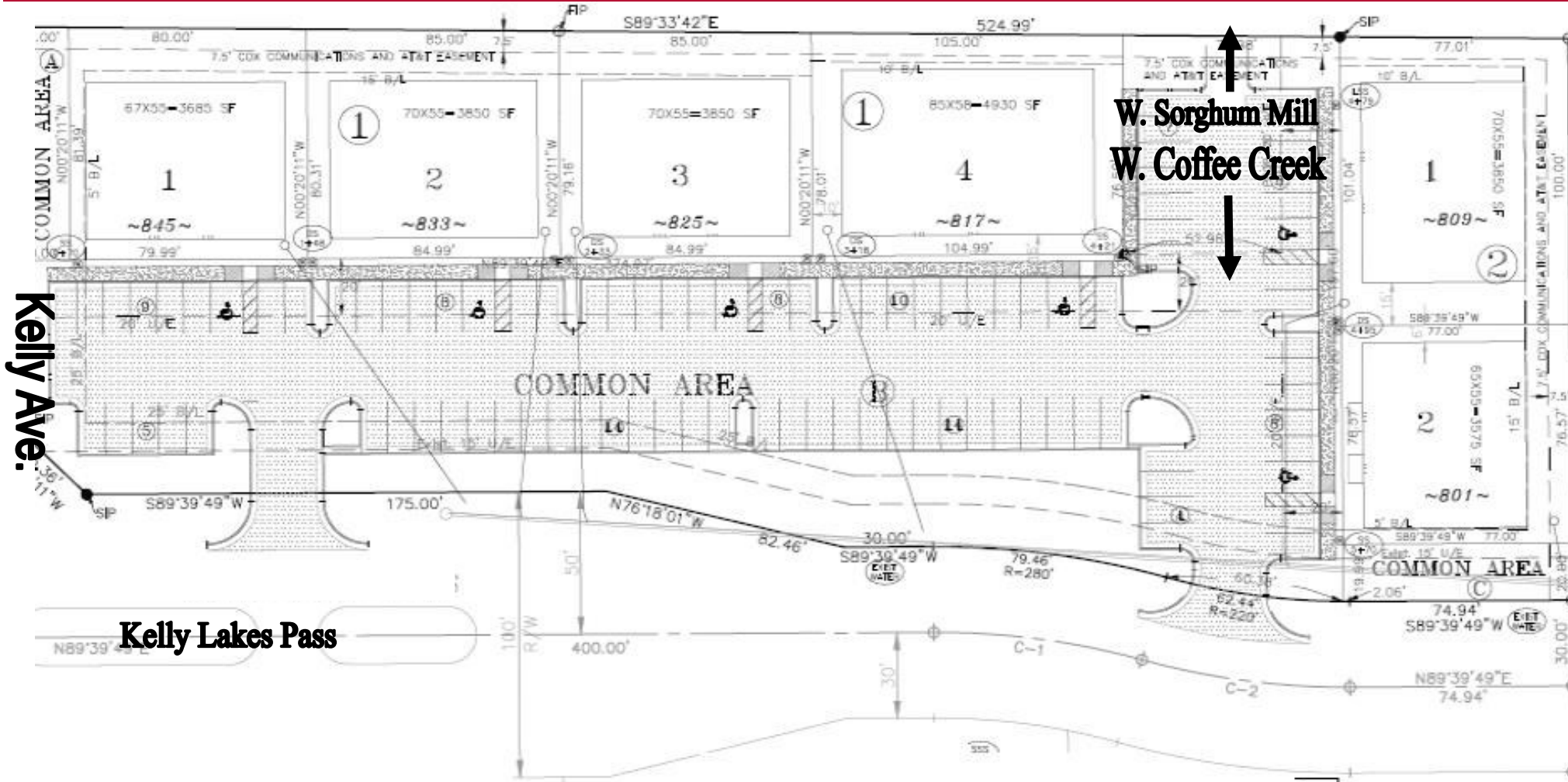


For Sale - Lots For Commercial Development

Kelly Lakes Business Park

801-845 Kelly Lakes Pass, Edmond, Oklahoma



Property Snapshot

\$18.00/SF

Edmond City Service

• All Utilities to Site

• Zoning PUD-Z070014

Newmark Grubb
Levy Strange Beffort

JIM ROSE

o. 405-879-4767 f. 405-286-6115 jrose@newmarklsb.com

MORE INFORMATION
AVAILABLE ONLINE:
www.newmarklsb.com

For Sale - Lots For Commercial Development

Kelly Lakes Business Park

801-845 Kelly Lakes Pass, Edmond, Oklahoma



833 Kelly Lakes Pass



Details

Kelly Lakes Business Park

\$5.50/SF

Lot Size & Pricing:

845 (0.08 acres)	\$160,000.00
833 (0.08 acres)	SOLD
825 (0.08 acres)	\$160,000.00
817 (0.11 acres)	\$180,000.00
809 (0.08 acres)	\$160,000.00
801 (0.08 acres)	\$160,000.00

Property Overview

Kelly Lakes Business Park is a new development located on N. Kelly Avenue between Coffee Creek Road and Sorghum Mill Rd with I-35 4 miles east. The prestigious Oak Tree Country Club with a Pete Dye designed golf course is moments away. Cross Timbers Elementary School is down the street while grocery, retail, restaurants, and banks can be found at Covell Rd. and Kelly Ave.

Property Highlights

- New Construction
- Quiet Surroundings
- Ample Drive Up Parking
- Edmond Utilities
- Near Retail, Restaurants, Grocery, Schools & Banks
- Easy Access To I-35 & Kilpatrick Turnpike

Newmark Grubb

Levy Strange Beffort

www.newmarklsb.com

OKLAHOMA CITY

204 N. Robinson, Suite 700, Oklahoma City, OK 73102
405-840-1500

TULSA

2021 S. Lewis, Suite 410, Tulsa, OK 74104
918-481-3200

The information contained herein was obtained from sources believed reliable; however, Newmark Grubb Levy Strange Beffort makes no guarantees, warranties or representations as to the completeness or accuracy thereof. The presentation of this property is submitted subject to errors, omissions, change of price or conditions prior to sale or lease, or withdrawal without notice. Independently Owned and Operated.