

N **NEWMARK GRUBB**
LEVY STRANGE BEFFORT

Enterprise Distribution Center | INDUSTRIAL SPACE FOR LEASE

1131 Enterprise Ave., Suite 13B, Oklahoma City, OK

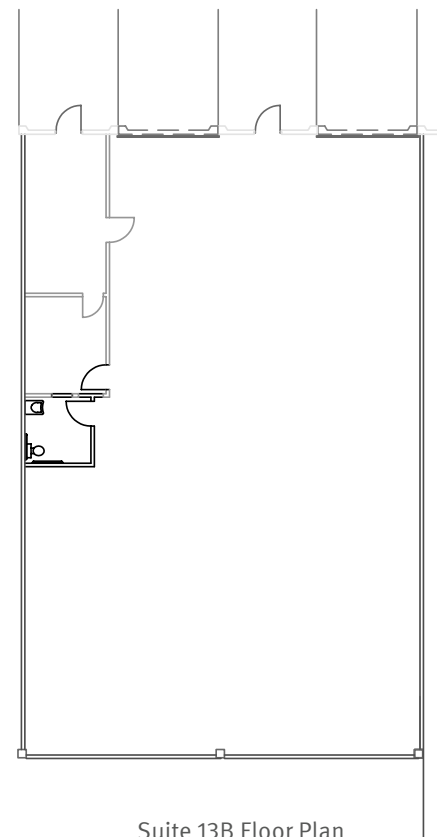
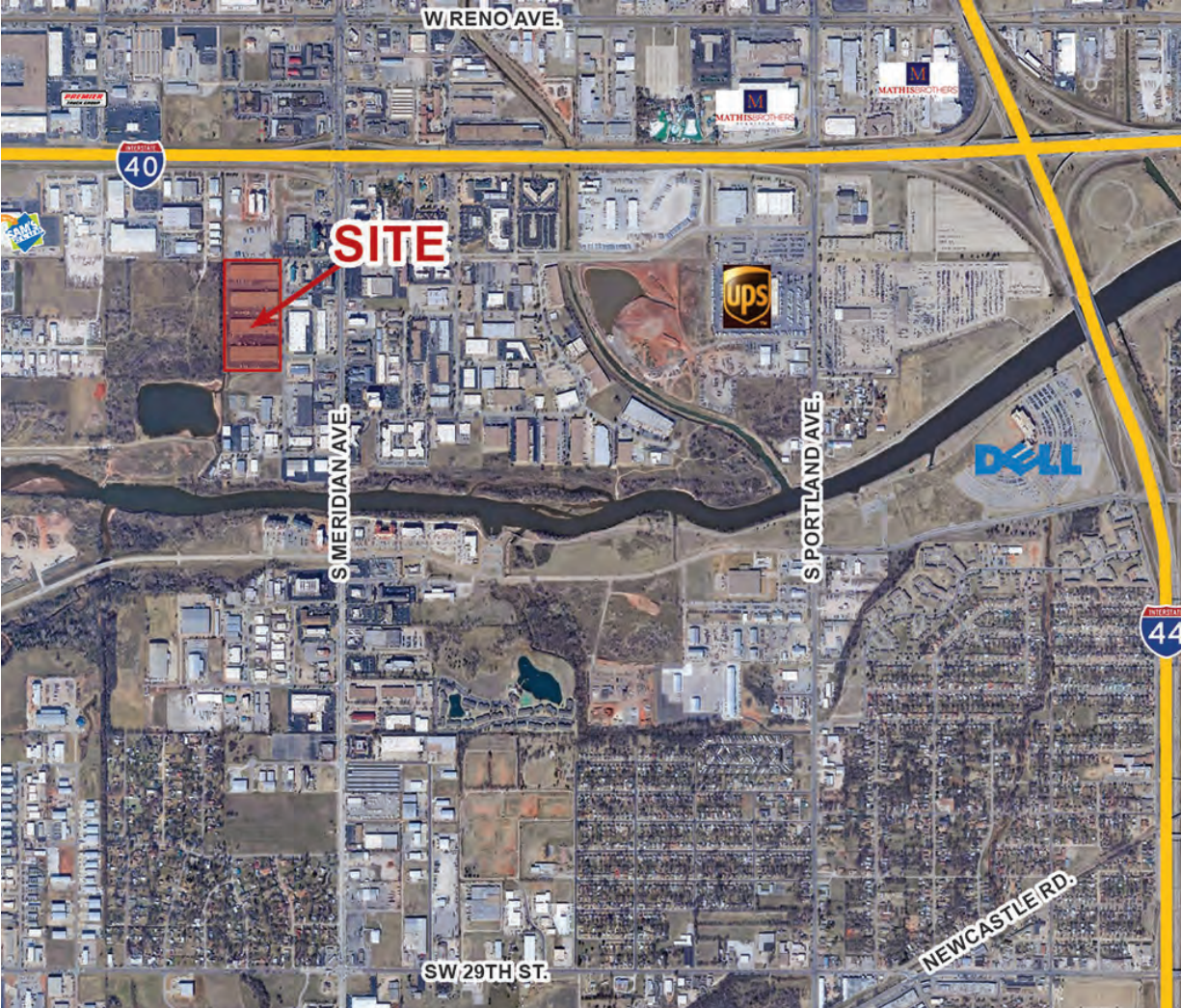
KRIS DAVIS, SIOR
kgdavis@newmarklsb.com
C: 405.202.9525

CALEB COX
ccox@newmarklsb.com
C: 405.923.6240

204 N. Robinson, Ste 700 OKC, OK, 73102
110 W. 7th, Ste 2600 Tulsa, OK, 74119

for more information, visit us at
newmarklsb.com

The information contained herein was obtained from sources believed reliable; however, Newmark Grubb Levy Strange Beffort makes no guarantees, warranties or representations as to the completeness or accuracy thereof. The presentation of this property is submitted subject to errors, omissions, change of price or conditions prior to sale or lease, or withdrawal without notice. Independently Owned and Operated.



Suite 13B Floor Plan

1131 Enterprise Ave., Suite 13B, Oklahoma City, OK | INDUSTRIAL SPACE FOR LEASE



DETAILS

Available SF	3,648 SF
Lease Rate	Contact Broker
Building Size	80,256 SF
Market	Oklahoma City
Cross Streets	S Meridian Ave. & Enterprise Way

PROPERTY HIGHLIGHTS

3,310 SF warehouse space
338 SF office space
2 grade level doors
24' column spacing
75' bay depth

PROPERTY OVERVIEW

Enterprise Distribution Center is located directly south of I-40 and less than 2 miles west of I-44 which allows for convenient and quick access to Oklahoma's interstate system. The property is located in a densely populated commercial area with a multitude of restaurants and national retailers within a 3 mile radius. Will Rogers World Airport is approximately three miles to the south.