



NEWMARK GRUBB
LEVY STRANGE BEFFORT

LAND FOR SALE | 40 ACRES

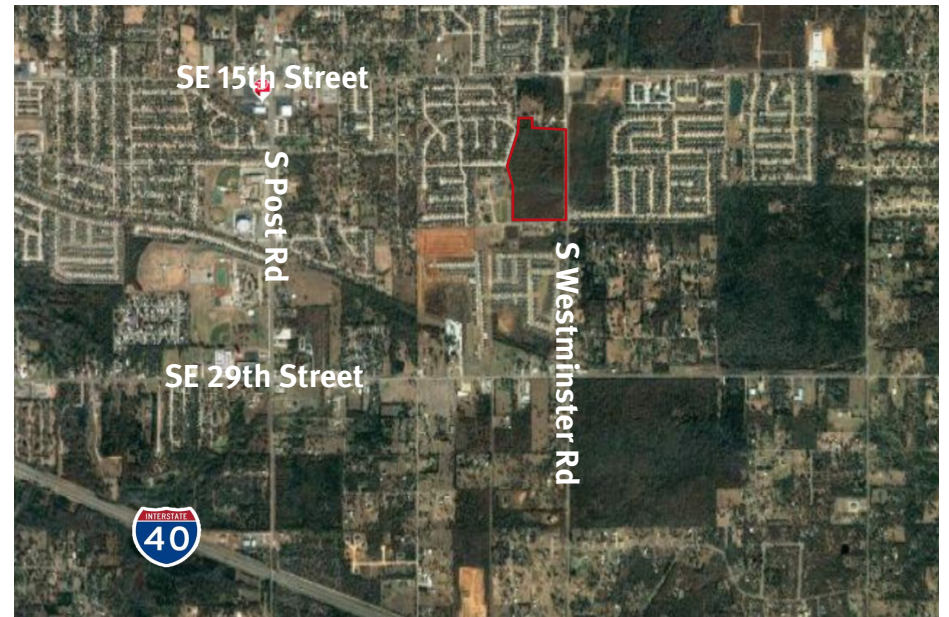
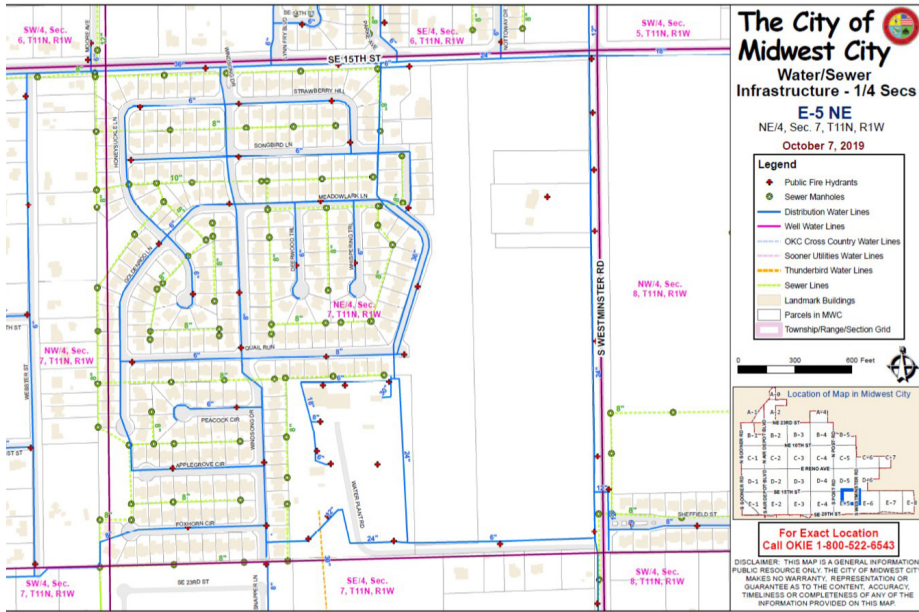
SE 15th Street & S Westminster Rd, Midwest City, OK 73130

BRAD RICE
brice@newmarklsb.com
C: 918.269.8586

204 N. Robinson, Ste 700 OKC, OK, 73102
110 W. 7th, Ste 2600 Tulsa, OK, 74119

for more information, visit us at
newmarklsb.com

The information contained herein was obtained from sources believed reliable; however, Newmark Grubb Levy Strange Beffort makes no guarantees, warranties or representations as to the completeness or accuracy thereof. The presentation of this property is submitted subject to errors, omissions, change of price or conditions prior to sale or lease, or withdrawal without notice. Independently Owned and Operated.



PROPERTY DETAILS

Sale Price	\$1,400,000
Land Size	Approximately 40 AC
Zoning	R-6 Single Family

PROPERTY OVERVIEW

40 acres of residential property with approximately 1,600' of frontage along Westminister. All major utilities are by the property for development.

PROPERTY HIGHLIGHTS

- Choctaw Schools
- Convenient to I-40 & the new Kickapoo Turnpike under construction
- Located 4 miles northeast of Tinker Air Force Base
- New 5 lane intersection with stop lights at corner of SE 15th & S Westminister (all directions)

