

**NEWMARK GRUBB**  
LEVY STRANGE BEFFORT

## Sooner Business Park | FLEX SPACE FOR LEASE

5717 SE 74th St., Suites C & D, Oklahoma City, OK

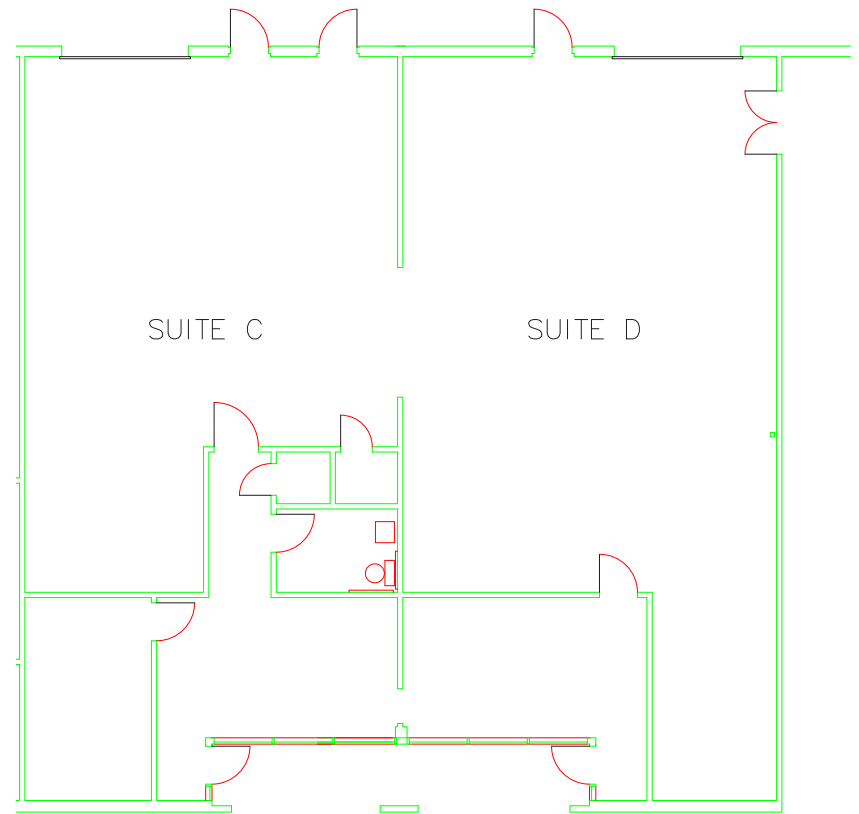
**CALEB COX**  
ccox@newmarklsb.com  
C: 405.923.6240

**KRIS DAVIS, SIOR**  
kgdavis@newmarklsb.com  
C: 405.202.9525

204 N. Robinson, Ste 700 OKC, OK, 73102  
110 W. 7th, Ste 2600 Tulsa, OK, 74119

for more information, visit us at  
[newmarklsb.com](http://newmarklsb.com)

The information contained herein was obtained from sources believed reliable; however, Newmark Grubb Levy Strange Beffort makes no guarantees, warranties or representations as to the completeness or accuracy thereof. The presentation of this property is submitted subject to errors, omissions, change of price or conditions prior to sale or lease, or withdrawal without notice. Independently Owned and Operated.



## Sooner Business Park | 5717 SE 74th St., Oklahoma City, OK | FOR LEASE



### DETAILS

Available SF	3,480 SF
Lease Rate	\$7.25/SF/YR/ (MG)
Building Size	40,560 SF
Year Built	1986
Remodeled	2011

### PROPERTY HIGHLIGHTS

- (2) 10' x 12' grade level doors
- 16' clear height
- Directly off the I-240 exit ramp
- Close to Tinker Air Force Base
- Access from both SE 74th & S Sooner Rd.

### PROPERTY OVERVIEW

Sooner Business Park is located directly off I-240 and S Sooner Road offering excellent visibility and quick access to Oklahoma City's interstate systems. The property is located less than 1/2 mile north of Oklahoma Heart Hospital South.