



N **NEWMARK GRUBB**
LEVY STRANGE BEFFORT

OFFICE BUILDING | FOR SALE

5500 N Portland Avenue, Oklahoma City, OK 73112

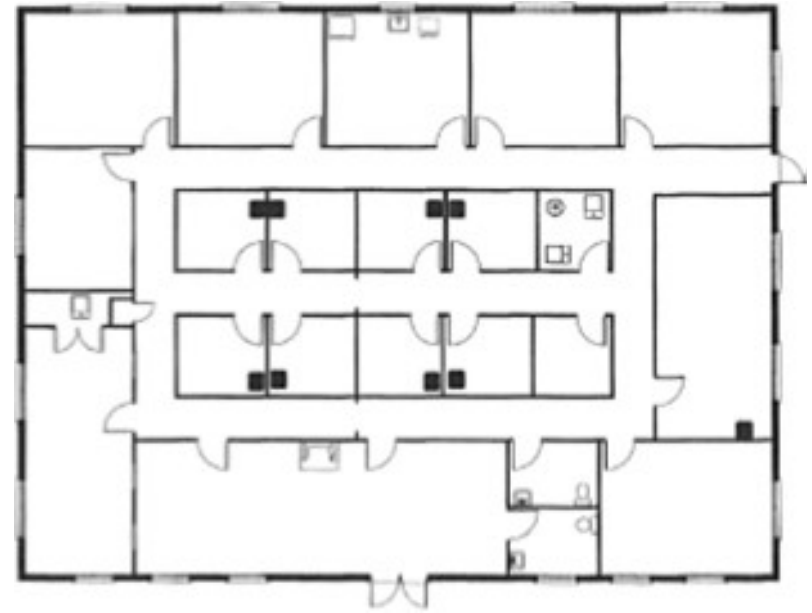
VICKI KNOTTS
vknotts@newmarklsb.com
405.879.4761

BEN KNOTTS
bknotts@newmarklsb.com
405.879.4766

204 N. Robinson, Ste 700 OKC, OK, 73102
110 W. 7th, Ste 2600 Tulsa, OK, 74119

for more information, visit us at
newmarklsb.com

The information contained herein was obtained from sources believed reliable; however, Newmark Grubb Levy Strange Beffort makes no guarantees, warranties or representations as to the completeness or accuracy thereof. The presentation of this property is submitted subject to errors, omissions, change of price or conditions prior to sale or lease, or withdrawal without notice. Independently Owned and Operated.



PROPERTY OVERVIEW

Located south of NW Expressway and is directly across from Integris Hospital, the building has a large reception area, 5 offices, 8 exam rooms, 2 large conference rooms and a kitchen. The surrounding area has multiple restaurants, fast food and retail. Immediate access to Hefner Parkway and I-44.



PROPERTY HIGHLIGHTS

Frontage on Portland Avenue	Drive up parking 23 parking spaces
Exterior security cameras	Monument signage
Granite counter tops wood shutters	Immediate access to Integris Hospital
Stacked stone fireplace in reception	Minutes to NW Expressway

PROPERTY DETAILS

Building Size	4,800 SF
Sale Price	\$850,000
Price/SF	\$177.08
Year Built	2012