



N **NEWMARK GRUBB**
LEVY STRANGE BEFFORT

Greenfield Business Park | FLEX SPACE FOR LEASE

235 N MacArthur Blvd., Suite 150, Oklahoma City, OK

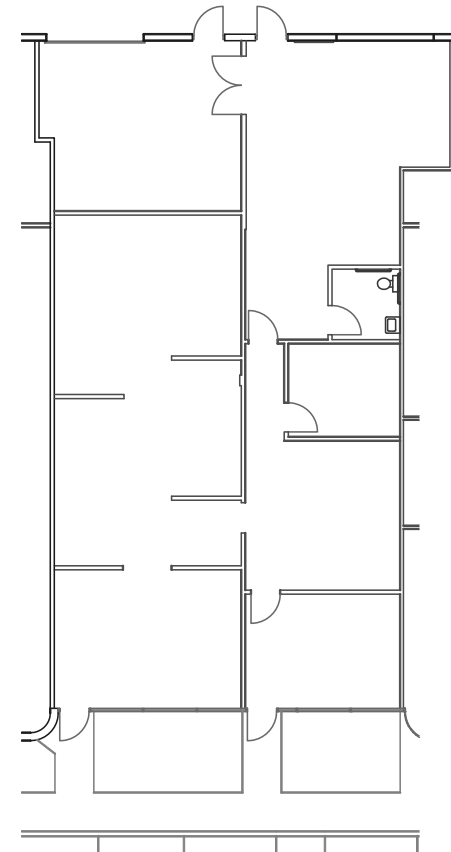
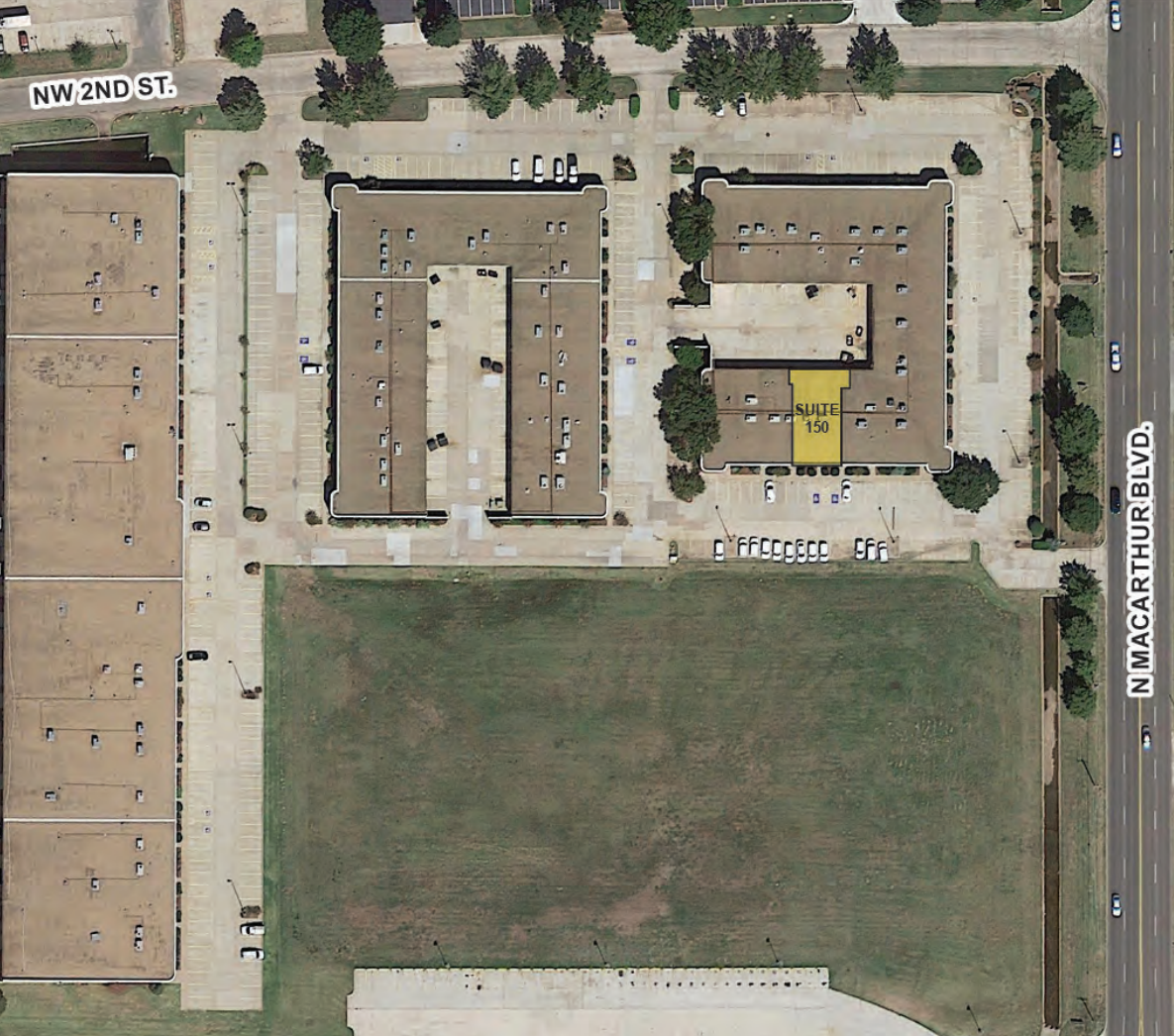
KRIS DAVIS, SIOR
kgdavis@newmarklsb.com
C: 405.202.9525

CALEB COX
ccox@newmarklsb.com
C: 405.923.6240

204 N. Robinson, Ste 700 OKC, OK, 73102
110 W. 7th, Ste 2600 Tulsa, OK, 74119

for more information, visit us at
newmarklsb.com

The information contained herein was obtained from sources believed reliable; however, Newmark Grubb Levy Strange Beffort makes no guarantees, warranties or representations as to the completeness or accuracy thereof. The presentation of this property is submitted subject to errors, omissions, change of price or conditions prior to sale or lease, or withdrawal without notice. Independently Owned and Operated.



Suite 150 Floor Plan

235 N MacArthur Blvd., Suite 150, Oklahoma City, OK | FLEX SPACE FOR LEASE



DETAILS

| | |
|---------------|----------------------------|
| Available SF | 2,708 SF |
| Lease Rate | Contact Broker |
| Building Size | 31,017 SF |
| Cross Streets | N MacArthur Blvd. & NW 2nd |

PROPERTY HIGHLIGHTS

| |
|------------------------------------|
| 2,329 SF office space |
| 379 SF warehouse space |
| Zoned I-3 |
| Easy access from N MacArthur Blvd. |

PROPERTY OVERVIEW

Greenfield Business Park is located 1/2 mile north of I-40 and two miles west of I-44 which allows for convenient and quick access to Oklahoma's interstate system. The property is located in a densely populated commercial area with a multitude of restaurants and national retailers within a three mile radius.