



N **NEWMARK GRUBB**
LEVY STRANGE BEFFORT

THE REGISTRY | FOR LEASE

2200 NW 50th Street, Oklahoma City, OK 73112

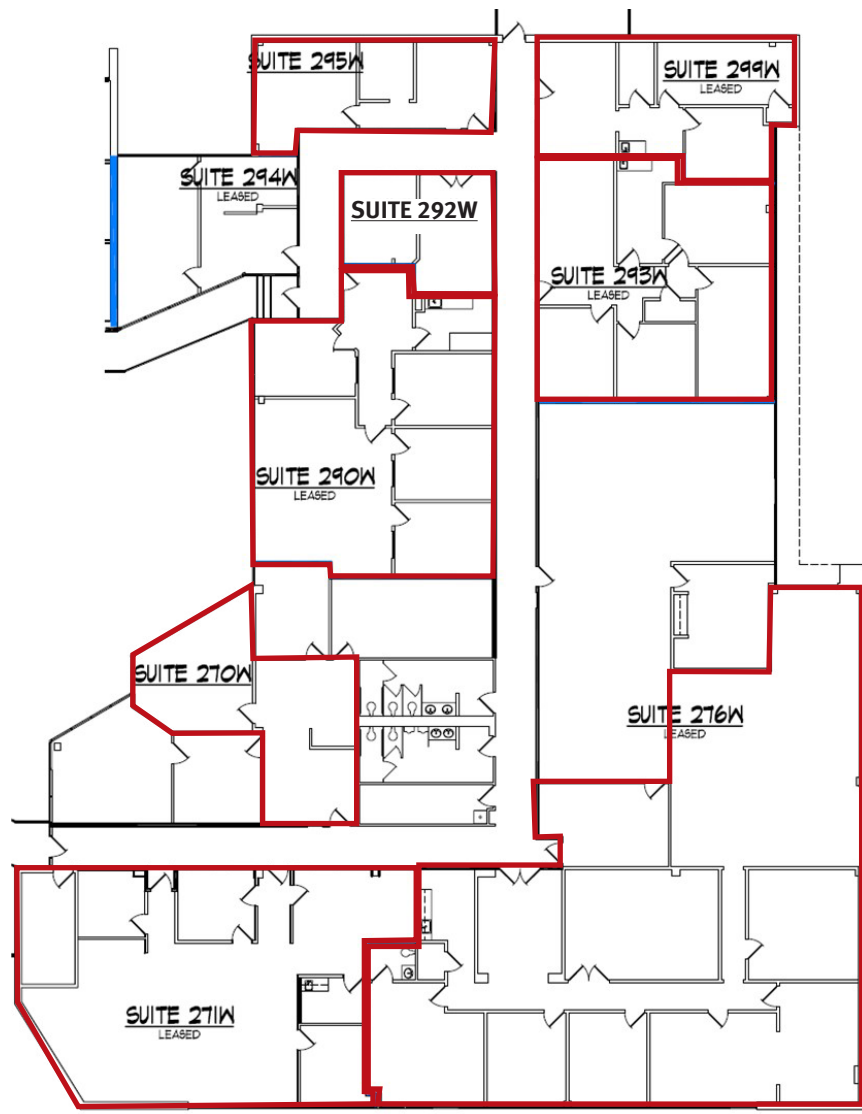
BEN KNOTTS
bknotts@newmarklsb.com
O: 405.879.4766

VICKI KNOTTS
vknotts@newmarklsb.com
O: 405.879.4761

204 N. Robinson, Ste 700 OKC, OK, 73102
110 W. 7th, Ste 2600 Tulsa, OK, 74119

for more information, visit us at
newmarklsb.com

The information contained herein was obtained from sources believed reliable; however, Newmark Grubb Levy Strange Beffort makes no guarantees, warranties or representations as to the completeness or accuracy thereof. The presentation of this property is submitted subject to errors, omissions, change of price or conditions prior to sale or lease, or withdrawal without notice. Independently Owned and Operated.



PROPERTY DETAILS

West	
Suite 270W	724 RSF
Suite 271W	1,963 RSF
Suite 276W	4,402 RSF
Suite 290W	1,696 RSF
Suite 292W	410 RSF
Suite 293W	1,426 RSF
Suite 295W	624 RSF
Suite 299W	861 RSF
Rental Rate	\$14.00/RSF
Lease Type	Full Service
Lease Term	3 - 5 Years

PROPERTY OVERVIEW

The Registry is a two-story office building located near the intersection of NW 50th Street and N Penn Avenue. 50 Penn Place is located to the east, as well as, Penn Square Mall to the north. Convenient to restaurants, fast food, retail and banking.

PROPERTY HIGHLIGHTS

Large & small suites available	Abundant parking
Monument signage	1 block from Penn Square Mall
Fiber cable available	Elevator access
Tall windows	On bus route
Conference room	Near restaurants, fast food and banks
After hours card key access	Convenient to I-44