



4700 UNITED DRIVE | FOR LEASE

OKLAHOMA CITY, OK 73179

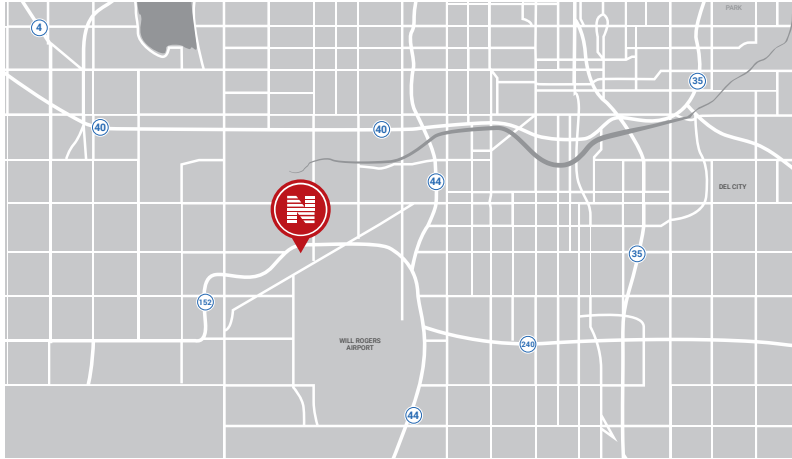
JIM KAREY

jkarey@newmarklsb.com

O: 405.879.4774 C: 405.203.1303

NEWMARK GRUBB
LEVY STRANGE BEFFORT

4700 UNITED DRIVE, OKLAHOMA CITY, OK 73179



PROPERTY OVERVIEW

Easily accessible location close to the major traffic corridors of Interstates 40 and 44. The property includes a large warehouse with two (2) offices, reception area, and a breakroom. It has two (2) bathrooms, one of which is accessed from the shop area and the other is accessed from the office.

The site is located between MacArthur and Rockwell Avenue just south of SW 44th Street in Oklahoma City, Oklahoma.

PROPERTY DETAILS

Lease Rate	\$4,900 / Month, NN
Year Built	2017
Total SF	5,200
Lot Size	1.0092 Acres
Parking	10 Spaces

PROPERTY HIGHLIGHTS

Office size: 900 SF±

5-Ton overhead crane

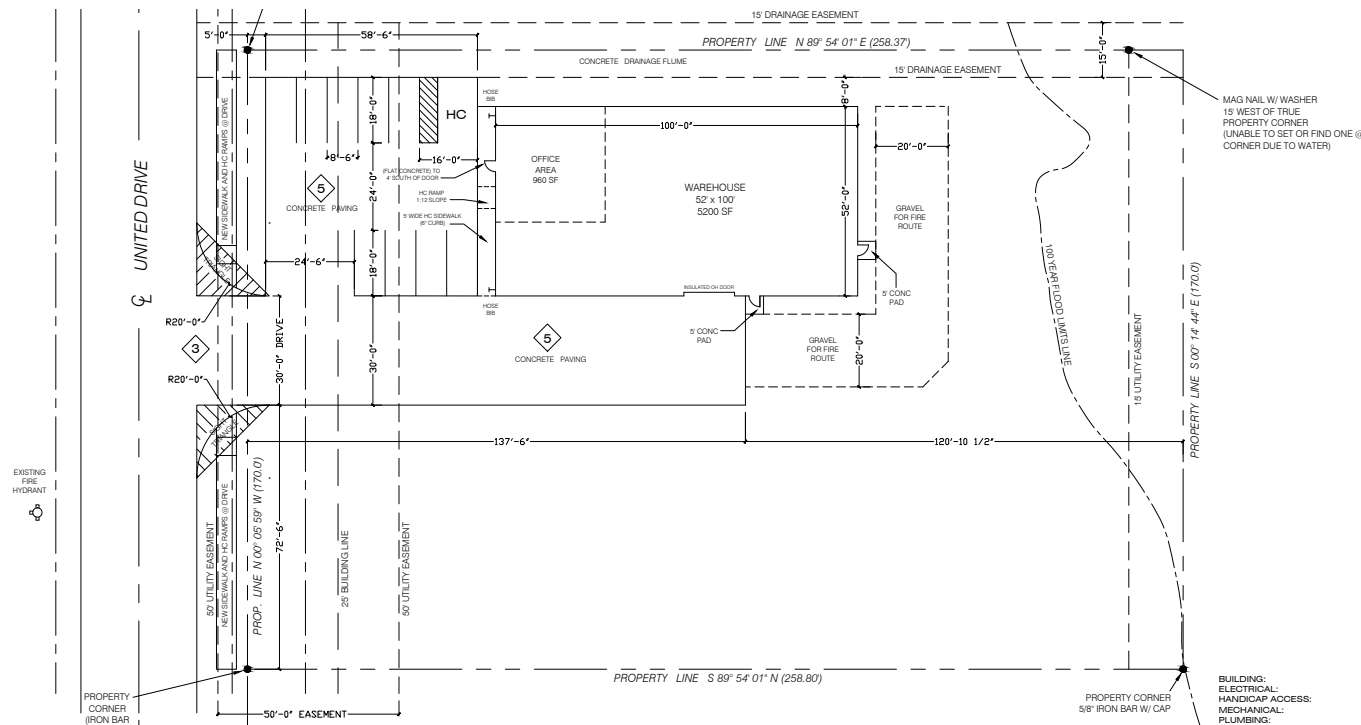
3-Phase electric, 400 amps, 208/120 volts

Fenced and graveled storage yard

One (1) grade door, 14' x 16'

HVAC in office area

Skylights



204 N. Robinson, Ste 700 OKC, OK, 73102 | for more information, visit us at
110 W. 7th, Ste 2600 Tulsa, OK, 74119 | **NEWMARKLSB.COM**

The information contained herein was obtained from sources believed reliable; however, Newmark Grubb Levy Strange Beffort makes no guarantees, warranties or representations as to the completeness or accuracy thereof. The presentation of this property is submitted subject to errors, omissions, change of price or conditions prior to sale or lease, or withdrawal without notice. Independently Owned and Operated.