



# *OIL CENTER | FOR LEASE*

2601 NW EXPRESSWAY, OKLAHOMA CITY, OK 73112

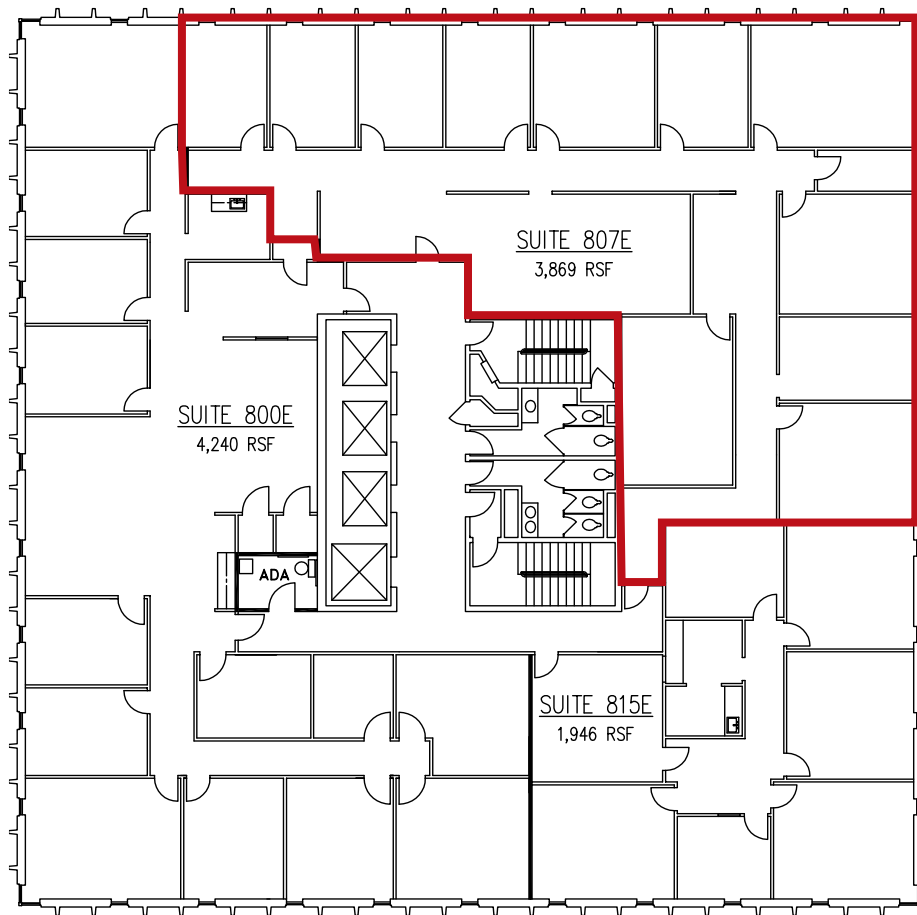
**VICKI KNOTTS**  
vknotts@newmarklsb.com  
O: 405.879.4761

**BEN KNOTTS**  
bknotts@newmarklsb.com  
O: 405.879.4766

**NEWMARK GRUBB**  
LEVY STRANGE BEFFORT



# OIL CENTER/2601 NW EXPRESSWAY



## PROPERTY DETAILS

### East Tower

<b>Suite 807E</b>	3,869 RSF
<b>Rental Rate</b>	\$18.00/RSF
<b>Lease Type</b>	Full Service
<b>Lease Term</b>	3 - 5 Years

## PROPERTY HIGHLIGHTS

Junior's Restaurant	On site engineers
Breakfast/lunch deli	Card key access
Hair salon	On site security after hours
Renovation of lobbies by year end	Covered & surface parking available
On site property management	Access to NW Expy both directions



204 N. Robinson, Ste 700 OKC, OK, 73102 | for more information, visit us at  
110 W. 7th, Ste 2600 Tulsa, OK, 74119 | [NEWMARKLSB.COM](http://NEWMARKLSB.COM)

The information contained herein was obtained from sources believed reliable; however, Newmark Grubb Levy Strange Beffort makes no guarantees, warranties or representations as to the completeness or accuracy thereof. The presentation of this property is submitted subject to errors, omissions, change of price or conditions prior to sale or lease, or withdrawal without notice. Independently Owned and Operated.