



**EXCHANGE
CENTER
EAST**

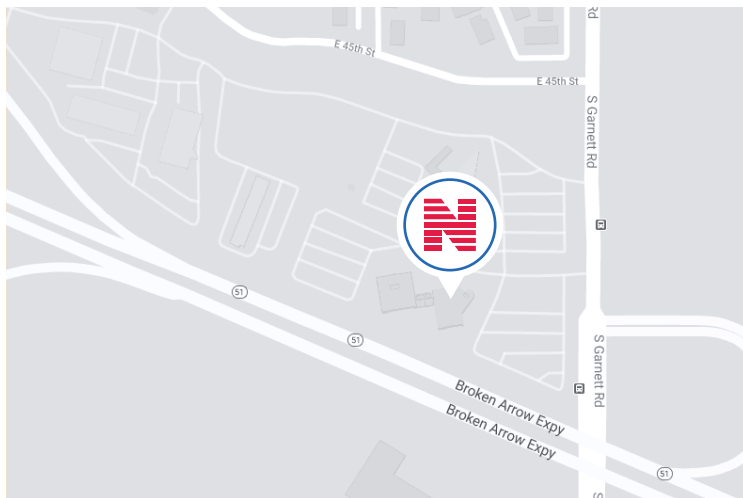
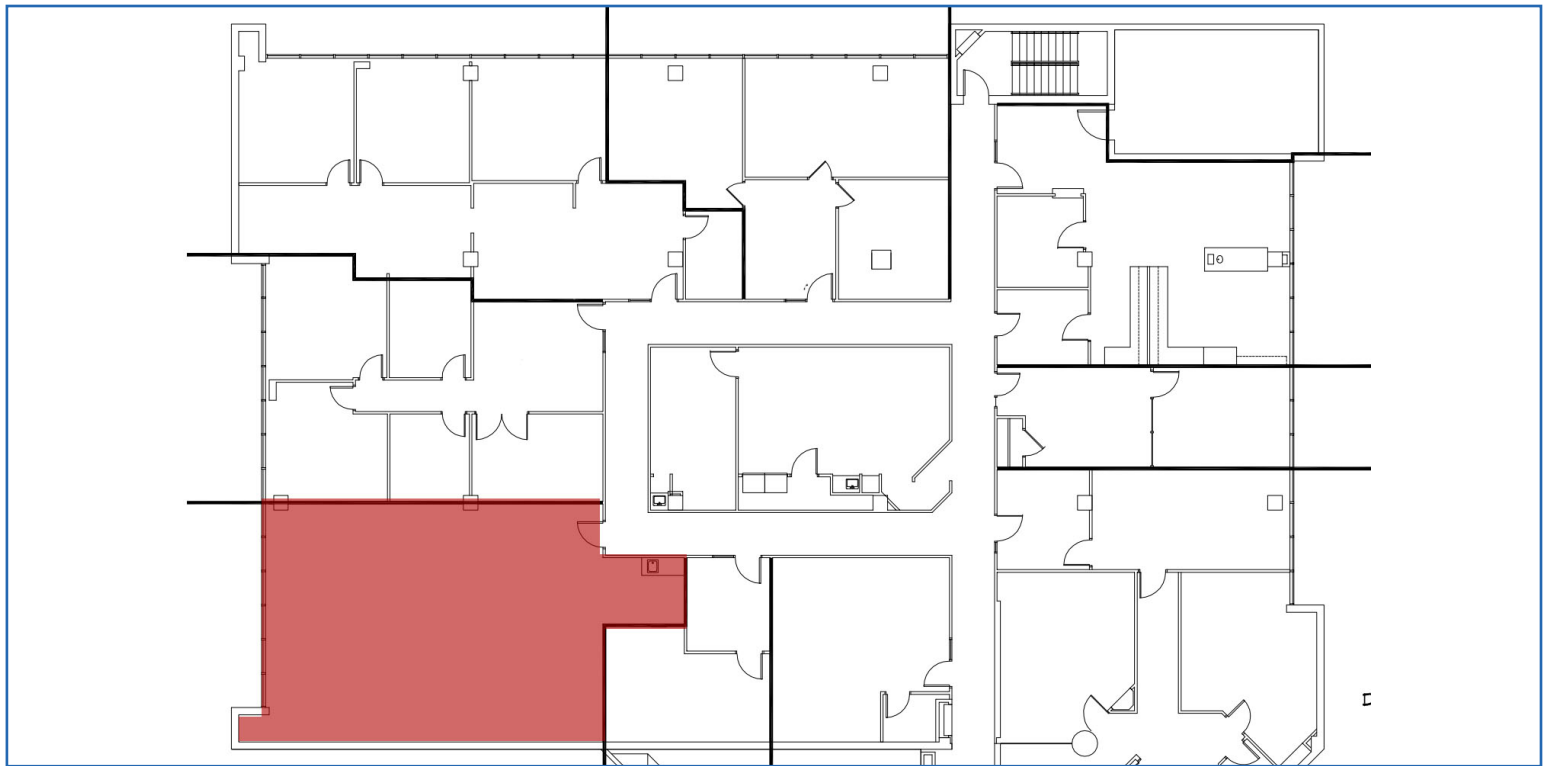
EXCHANGE CENTER EAST | SPACE FOR LEASE

4606 SOUTH GARNETT ROAD, TULSA, OK

AMITY MCCABE
amccabe@newmarklsb.com
C: 918.282.5004

NEWMARK GRUBB
LEVY STRANGE BEFFORT

EXCHANGE CENTER EAST



PROPERTY OVERVIEW

Perfectly situated Class B office space located in east Tulsa with immediate access to Broken Arrow Expressway and Highway 169. High visibility, terrific location, ample parking, and on-site property management.

SPACE DETAILS

Suite Number	312
Total RSF	1,521
Rental Rate	\$15.50
Lease Type	Full Service
Lease Term	3-5 years
Parking	Open

PROPERTY HIGHLIGHTS

- Onsite engineer
- Onsite management
- Park-like grounds
- Ample parking



204 N. Robinson, Ste 700 OKC, OK, 73102 | for more information, visit us at
110 W. 7th, Ste 2600 Tulsa, OK, 74119 | NEWMARKLSB.COM

The information contained herein was obtained from sources believed reliable; however, Newmark Grubb Levy Strange Beffort makes no guarantees, warranties or representations as to the completeness or accuracy thereof. The presentation of this property is submitted subject to errors, omissions, change of price or conditions prior to sale or lease, or withdrawal without notice. Independently Owned and Operated.