



INDUSTRIAL PROPERTY | FOR LEASE

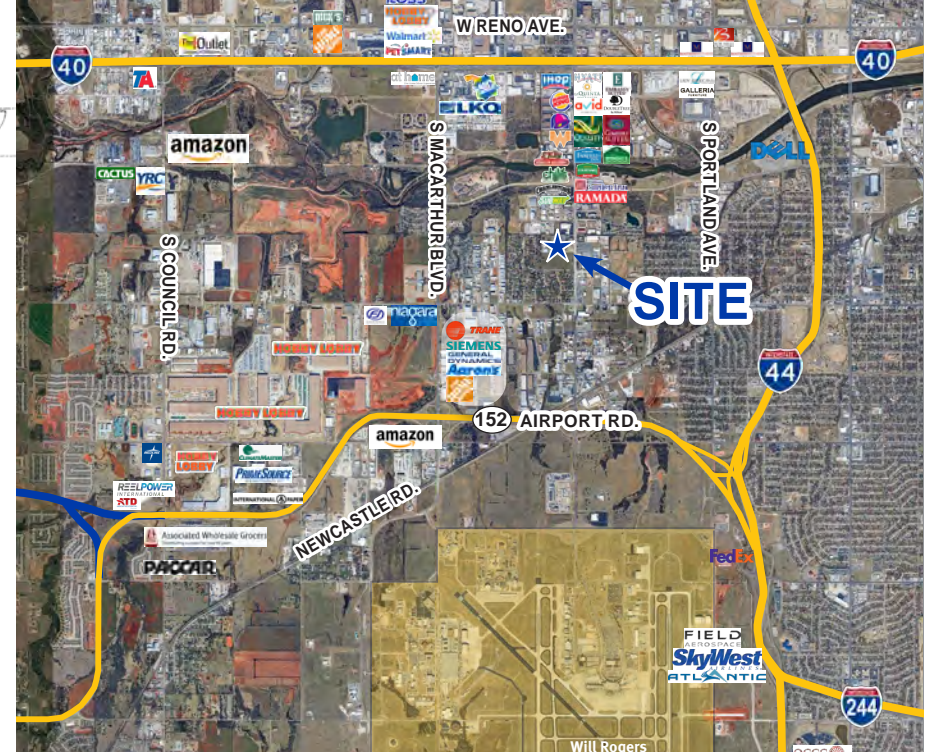
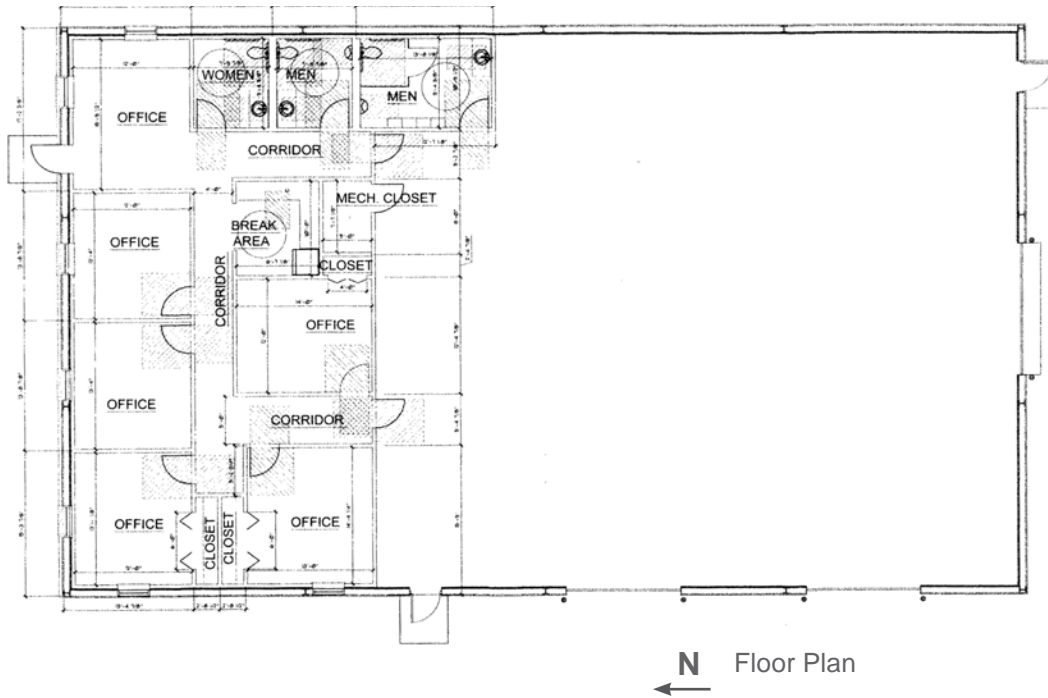
4624 SW 23RD ST., OKLAHOMA CITY, OK

KRIS DAVIS, SIOR
kgdavis@newmarkrp.com
C: 405.202.9525

BRETT PRICE, CCIM, SIOR
bprice@newmarkrp.com
C: 405.613.8380

NEWMARK
ROBINSON PARK

4624 SW 23RD ST. / FOR LEASE



DETAILS

Available SF	6,000 SF
Lease Rate	\$5,000/MO (NNN)
Building Size	6,000 SF
Lot Size	.94 Acres
Submarket	Southwest
Cross Streets	SW 23rd & S Meridian

HIGHLIGHTS

(3) 12' x 14' grade level doors
21' clear height
(1) 5-ton crane
1,800 SF± office space
Floor drain with separator
Zoned I-2

PROPERTY OVERVIEW

This property is located less than two miles from I-40, I-44 and Hwy 152. It features 1,800 square feet of office space with four offices, one conference room and three restrooms, and also features a fenced and paved yard.



204 N. Robinson, Ste 700 OKC, OK, 73102 | for more information, visit us at
110 W. 7th, Ste 2600 Tulsa, OK, 74119 | **NEWMARKRP.COM**

The information contained herein was obtained from sources believed reliable; however, Newmark Robinson Park makes no guarantees, warranties or representations as to the completeness or accuracy thereof. The presentation of this property is submitted subject to errors, omissions, change of price or conditions prior to sale or lease, or withdrawal without notice. Independently Owned and Operated.