



FOR LEASE

2916 ASTORIA WAY, EDMOND, OK 74034

BRANDON BIRDWELL

bbirdwell@newmarklsb.com

O: 405.463.3239 C: 405.612.4639

LEVI BALLARD

lballard@newmarklsb.com

O: 405.208.8639 C: 405.426.5592

NEWMARK GRUBB
LEVY STRANGE BEFFORT

FOR LEASE / 2916 ASTORIA WAY, EDMOND, OK 73034



PROPERTY OVERVIEW

Located south of the intersection of E. 2nd Street and S. Coltrane, this 2,274 square foot space was formerly used as medical space but could easily be used as general office space.

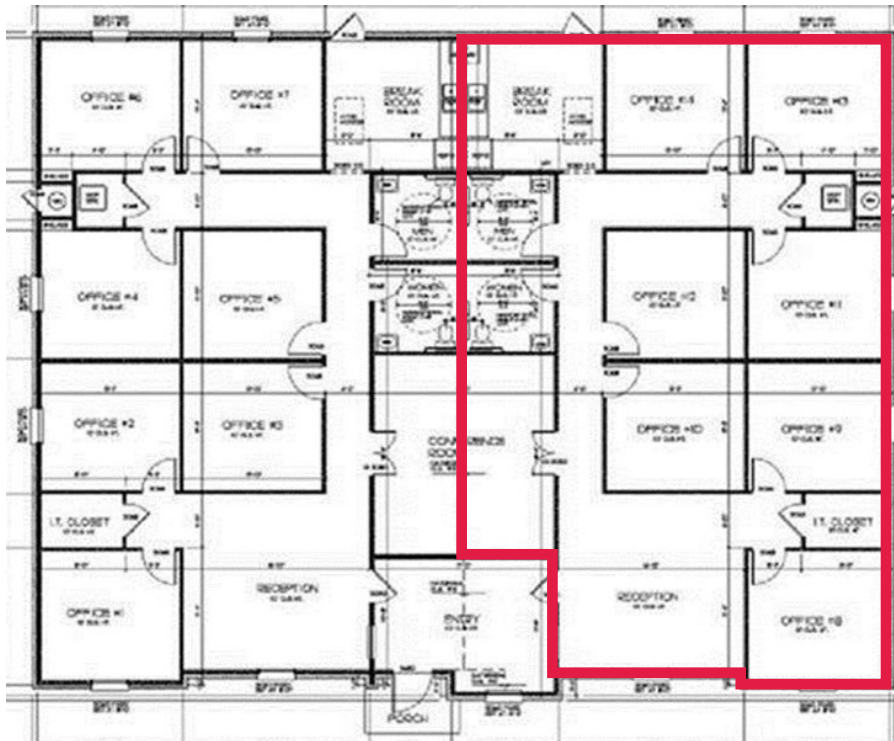
The interior contains 7 private offices, a large reception/waiting area, breakroom, and 2 ADA restrooms. The surrounding area has fast food, restaurants, and multiple hotels.

PROPERTY DETAILS

Available	2,274 SF
Lease Rate	\$18.00/SF
Lease Type	NNN
Lease Term	3 - 5 Years

PROPERTY HIGHLIGHTS

- Monument signage available
- Beautiful interior finishes
- Drive up parking
- Move in ready
- Food & hotel options in the area
- Convenient to I-35



204 N. Robinson, Ste 700 OKC, OK, 73102 | for more information, visit us at
110 W. 7th, Ste 2600 Tulsa, OK, 74119 | **NEWMARKLSB.COM**

The information contained herein was obtained from sources believed reliable; however, Newmark Grubb Levy Strange Beffort makes no guarantees, warranties or representations as to the completeness or accuracy thereof. The presentation of this property is submitted subject to errors, omissions, change of price or conditions prior to sale or lease, or withdrawal without notice. Independently Owned and Operated.