



KENNEDY BUILDING | 48,057 SF FOR SUBLEASE

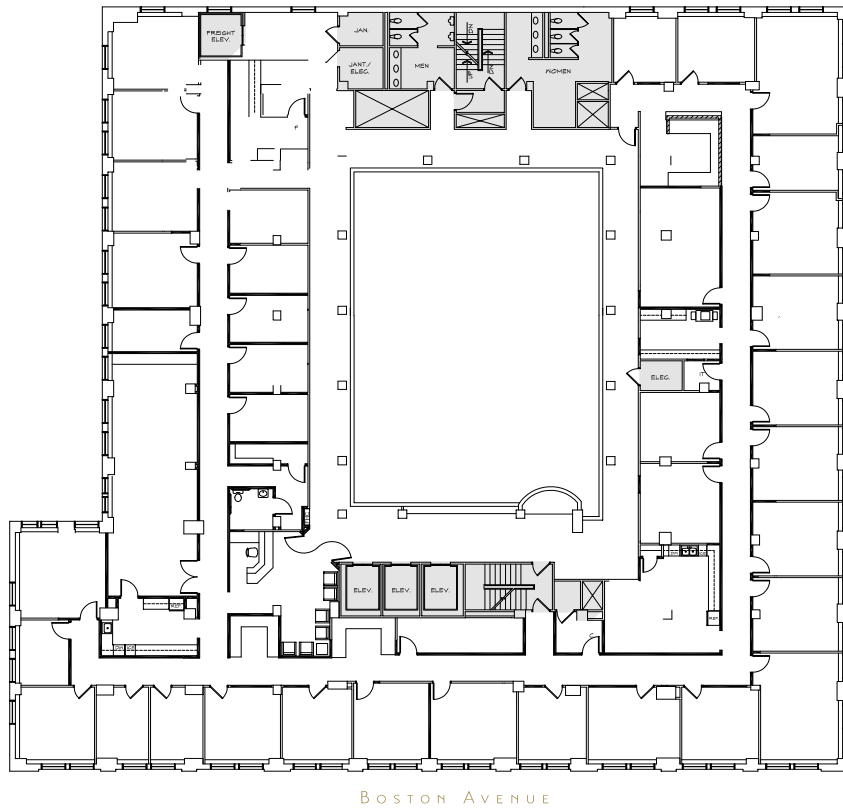
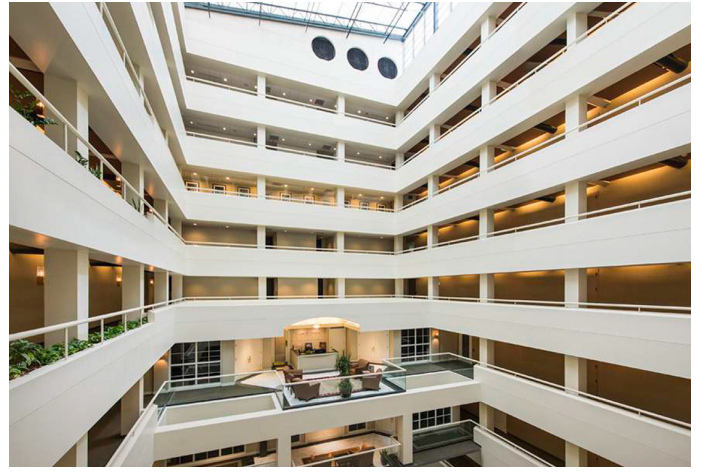
321 SOUTH BOSTON AVENUE, TULSA, OK 74103

RICK GUILD
rguild@newmarkrp.com
C: 918.645.3677

NEWMARK
ROBINSON PARK



PROPERTY DETAILS		LEASEHOLD FEATURES	
Available Space	48,057 SF	Fully furnished office space with beautiful furniture in place	
Sub-Lease Rate	\$12/SF	Large conference rooms	
Lease Term	Through October 31, 2026 (65-months remian on the existing lease, with a possible option to extend to 120 months)	Several medium-sized conference rooms	
Parking	50 card access attached garage spaces	Abundant interior file storage rooms	
		Kitchens	
		Numerous perimeter offices	
		Entire space is fully sprinkled	
		Furniture and phones in place and ready for immediate occupancy	
		Magnetic map walls	
PROPERTY HIGHLIGHTS			
Completey updated Historical Building		Convenient surface parking for visitors	
The best location in Downtown Tulsa		Hundreds of restaurants within walking distance	
Covered garage parking for all tenants		Connected to the Downtown Tulsa tunnel system	
Marriott and Hyatt Hotel connected to the building		Close proximity to Federal and State Courthouses and City of Tulsa Building	
Spectacular 10-story interior atrium		Chase Bank and ATM in Lobby	
Updated passenger elevators		Walking distance to the prestigious Summit Club	



10TH FLOOR PLAN
16,019

Three full floors available; 6th, 9th and 10th floors totaling 48,057 SF



204 N. Robinson, Ste 700 OKC, OK, 73102 | for more information, visit us at
110 W. 7th, Ste 2600 Tulsa, OK, 74119 **NEWMARKRP.COM**

The information contained herein was obtained from sources believed reliable; however, Newmark Robinson Park makes no guarantees, warranties or representations as to the completeness or accuracy thereof. The presentation of this property is submitted subject to errors, omissions, change of price or conditions prior to sale or lease, or withdrawal without notice. Independently Owned and Operated.