



# STRATA TOWER | FOR LEASE

123 ROBERT S KERR, OKLAHOMA CITY, OK 73102

**MARK BEFFORT**  
mbeffort@newmarkrp.com  
O: 405.879.4757

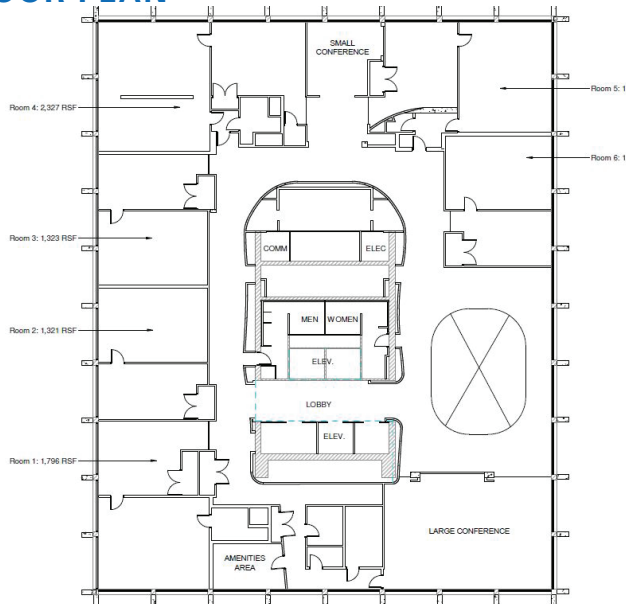
**NEWMARK**  
ROBINSON PARK



# STRATA TOWER / FLOOR 29



## FLOOR PLAN



## PROPERTY OVERVIEW

The Strata Tower is located in the heart of Oklahoma City's Central Business District and occupies almost two city blocks. The campus design is a unique mix of architecture and landscape architecture woven to balance company needs and civic engagement.

## DETAILS

Building Size	489,408 SF
Floor 29	12,773 SF
Premises	Individual Suites See Floor Plan Below
Lease Rate	\$26.00/SF
Operating Expenses	Full Service Gross
Lease Term	Flexible
Improvements	Available

## AMENITIES



24-Hour  
On-Site Security



Fitness Center



Loading Dock



Auditorium



Conference Center



Outdoor  
Green Space



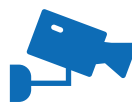
Connected to  
Underground



Covered Parking



Dedicated  
Freight Elevator



24-Hour  
Video Surveillance



On-site  
Management/  
Maintenance



ATM