



GREENFIELD
BUSINESS PARK

GREENFIELD BUSINESS PARK | FOR LEASE

235 N MACARTHUR BOULEVARD, OKLAHOMA CITY, OK 73127

BRANDON BIRDWELL

bbirdwell@newmarkrp.com

O: 405.463.3239 C: 405.612.4639

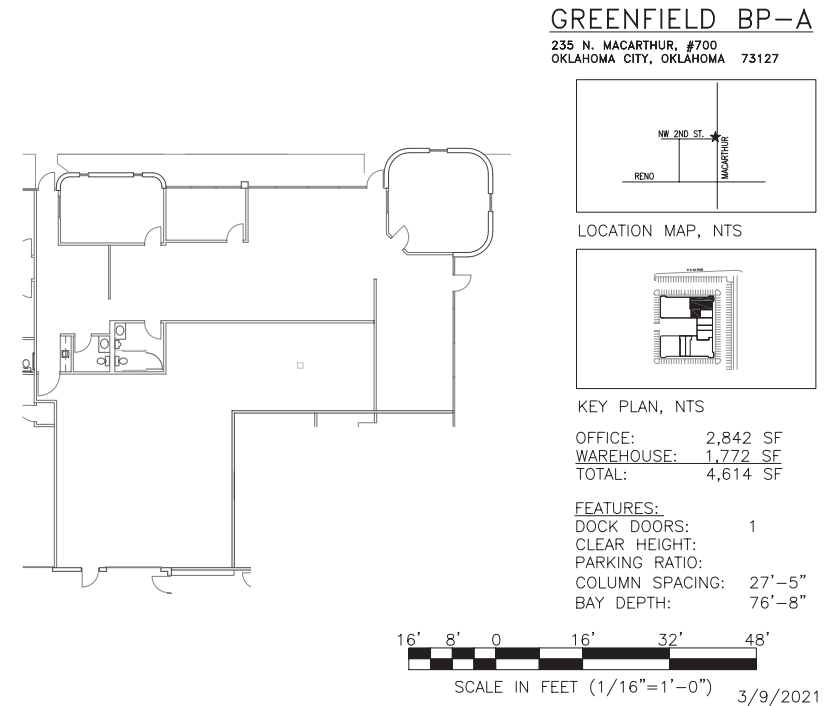
LEVI BALLARD

lballard@newmarkrp.com

O: 405.208.8639 C: 405.426.5592

NEWMARK
ROBINSON PARK

GREENFIELD BUSINESS PARK/235 N MACARTHUR BOULEVARD



PROPERTY OVERVIEW

Greenfield Business Park is located 1/2 mile north of I-40 and two miles west of I-44 which allows for convenient and quick access to Oklahoma's interstate system. The property is located in a densely populated commercial area with a multitude of restaurants and national retailers within a three mile radius.

DETAILS

Available SF	2,000 - 4,614
Lease Rate	\$9.00/SF (NNN)
Total SF	31,017
Grade Level Doors	1

HIGHLIGHTS

14' clear height
1 grade level door
Zoned I-3
Easy access from N MacArthur Boulevard

