



# OKLAHOMA TOWER

210 W PARK AVENUE, OKLAHOMA CITY, OK 73102

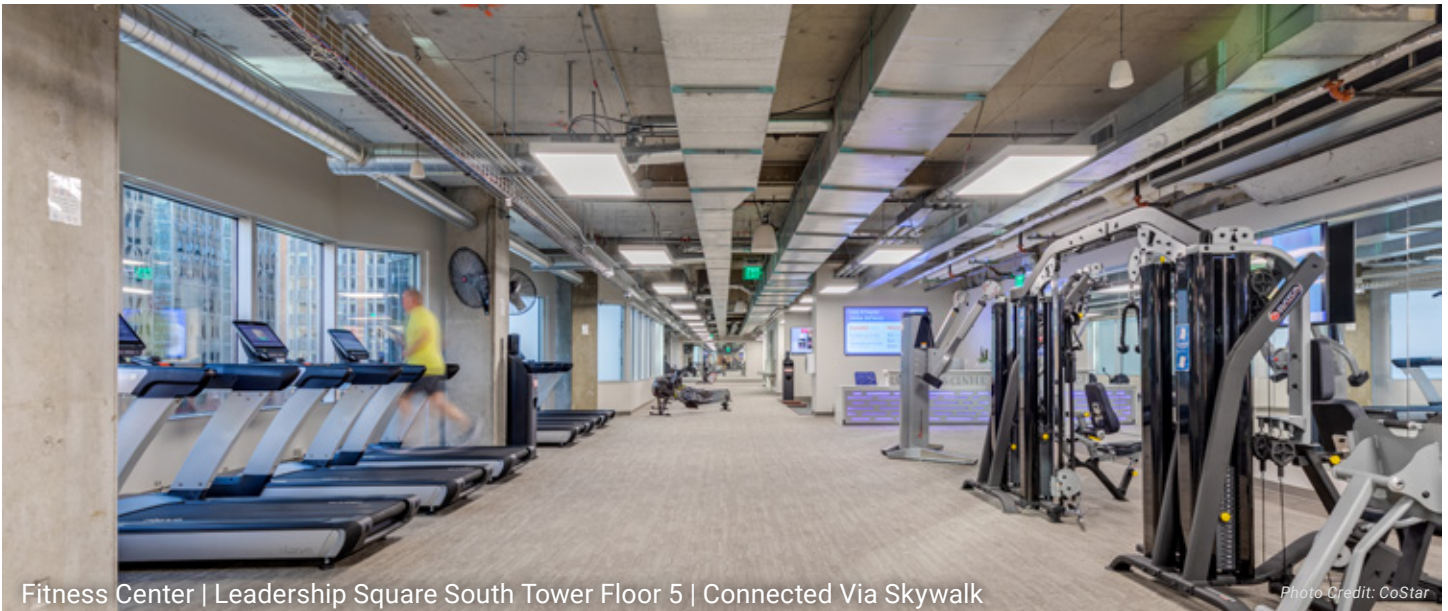
Photo Credit: CoStar

**BRENT CONWAY**  
bconway@newmarkrp.com  
O: 405.208.8636 C: 405.850.242

**BILL COHLMIA**  
bcohlmia@newmarkrp.com  
O: 405.600.6858 C: 405.620.1978

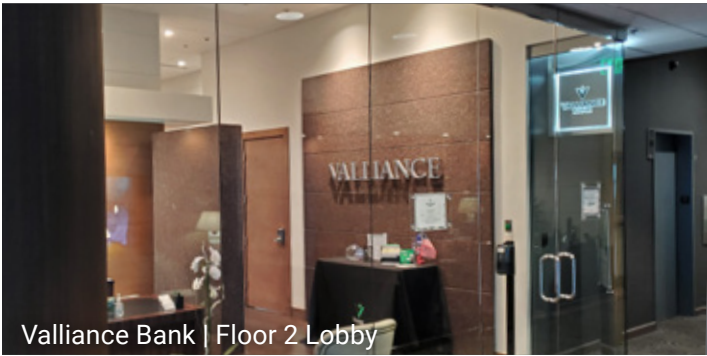
**NEWMARK**  
ROBINSON PARK





Fitness Center | Leadership Square South Tower Floor 5 | Connected Via Skywalk

Photo Credit: CoStar



Valliance Bank | Floor 2 Lobby



The Manhattan | Lobby

EXECUTIVE SUMMARY

Oklahoma Tower is centrally located with direct skywalk access to multiple buildings in the Central Business District. Boasting a beautiful atrium with a grand staircase, this office space is one of the premier properties in the area. Retail tenants include: Teena Hicks Company, Park Ave Salon, Valliance Bank, The Manhattan, Richey’s Grill and Chicago Title.

DETAILS

Size	565,414
Rental Rate	\$27.50/SF
Lease Type	FSG
Lease Term	Flexible
Freight Elevator	Fully Accessible
Avg. Ceiling Height	9 Feet

BUILDING SPECS

Entrances	5 total street-level entrances, 2nd floor lobby accessible via skywalk system	Fiber	Cox direct high-speed fiber
Security	24/7 Security with video surveillance, patrols, and rovers	Energy Savings	Daily tracking of meter readings, tracking of HVAC trends
Elevators	12 passenger, 1 freight, 1 shuttle	Generator	Emergency generator located on roof, diesel fueled for life-safety
Safety Features	24/7 security, engineers on site, fire control room with fire panel, voice annunciator, elevator controls, infinity door access controls, and key boxes. Fire detection with automatic sprinkler system	HVAC	14 heating and cooling zones and 6 cooling only zones per floor. 2-800 ton chillers and 1-250 ton chillers
		Loading Dock	Fully-sprinkled, multi-truck dock with a trailer-high landing and an electric power lift with 4,000 pound capacity

## AMENITIES + NEARBY RETAILERS



**Garage  
Parking**



**Conference  
Center**



**24-Hour  
Security**



**On-Site  
Recycling**



**EV Charging  
Stations**



**Indoor  
Lounge Area**



**On-Site Men's  
Clothier**



**On-Site  
Bank**



**Fitness  
Centers**



**Bike Racks  
+ Shop**



**Massage  
Service**



**On-Site  
Salon**



**OKC  
Streetcar Stop**



**Mother's  
Room**



**On-Site  
Eyecare**



**Bee Healthy**  
*City Place*



**City Bites**  
*Leadership Square*



**Gilded Acorn**  
*First National*



**Ground Floor Cafe**  
*Leadership Square*

**KITCHEN**  
N° 324

**Kitchen 324**  
*Braniff Building*

**nebu**

**Nebu**  
*Devon*



**The Manhattan**  
*Oklahoma Tower*



**Richey's Grill**  
*Oklahoma Tower*



**Stella Nova**  
*First National*



**Tellers**  
*First National*



**Cow Calf-Hay**  
*Court Plaza*



**Flint**  
*Colcord Hotel*



**ROBINSON PARK**

**THE PEOPLE OF OKLAHOMA TOWER**

In the Downtown district of Oklahoma City, Robinson Park manages several multi-tenant office buildings, hotels and parking garages centered around the intersection of Robinson and Park. This sizable footprint in the district cultivates an amenity-rich environment for our tenants to mutually benefit from.

When your company joins our network, you and your team will experience the Robinson Park difference!

**2.7M**

Total Office  
Square Feet

**3,841**

Parking  
Spaces

**333**

Hotel  
Rooms

**60+**

Unique  
Amenities



**CHANTEL ARCHER**

**Property Manager**

carcher@robinson-park.com



**BRYNN PENDERGRASS**

**Assistant Property Manager**

bpendergrass@robinson-park.com

## THE BENEFITS OF ROBINSON PARK

**Tenant App** | The RP App allows you to interact with our properties like never before. Listed are just some of the amazing features, and we're always adding more to make it your One-Stop-RP-Shop!

**Corporate Discounts** | As a RP Tenant, you gain access to several Corporate Discounts for things like hotels, tickets, technology, and much more!

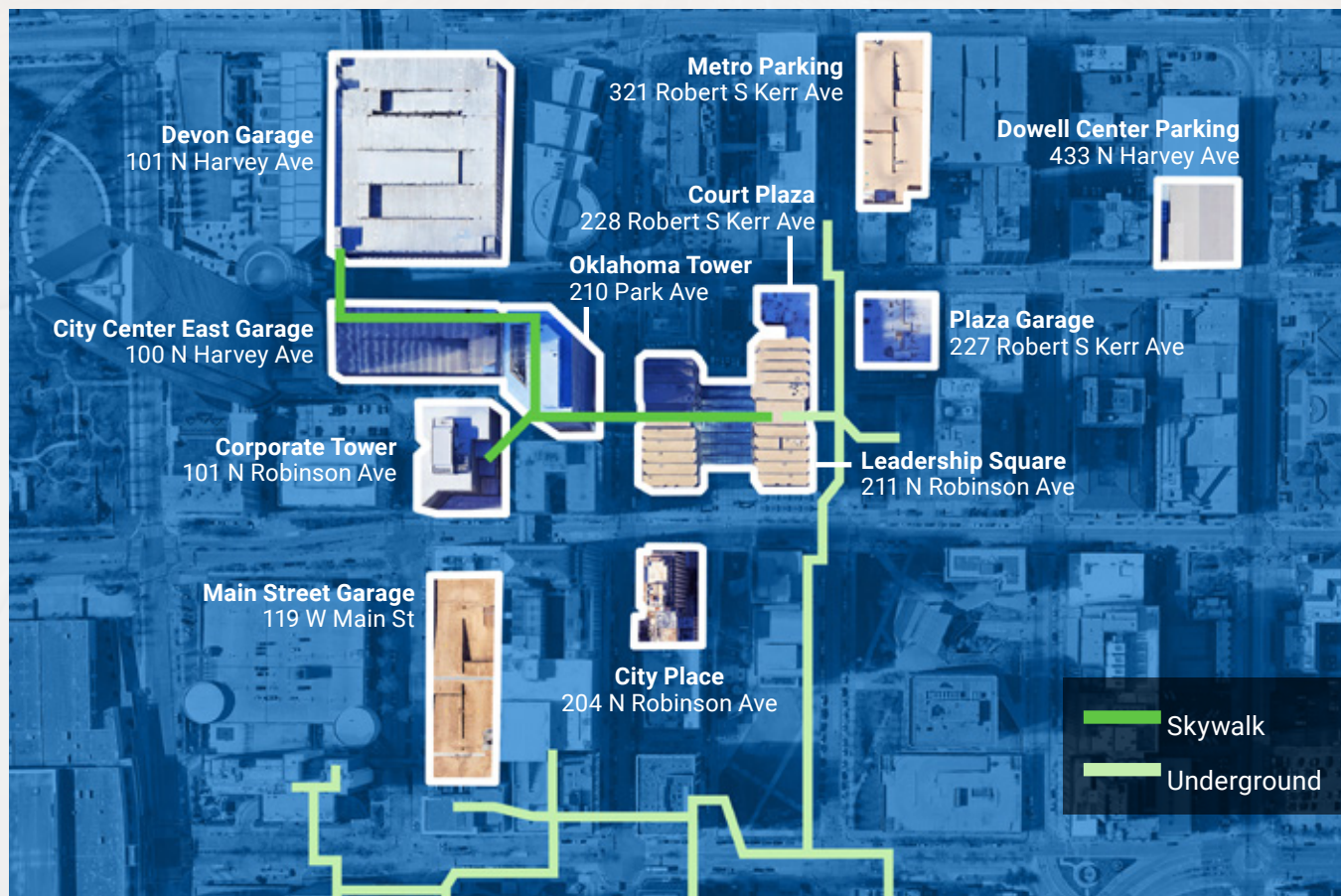


- Direct Communication Link To Management 24/7
- Submit Work Orders and Maintenance Requests
- Schedule Conference Rooms
- Join our Gyms and Manage your Membership
- View and Register for Events
- Receive Notifications Directly from Management
- Security Access to Enter Property
- More features are added regularly!





## PARKING + TRANSPORTATION DOWNTOWN



SCAN OR CLICK HERE  
FOR SUITE AVAILABILITY

