

A tall, modern office building with a grid of windows and vertical concrete columns. The building is identified by a sign at the top as the Bank of Oklahoma Mortgage. It is surrounded by a parking lot, some trees, and a clear blue sky with light clouds.

 **BANK OF OKLAHOMA MORTGAGE**

# COPPER OAKS | FOR LEASE

7060 S YALE, TULSA, OK 74137

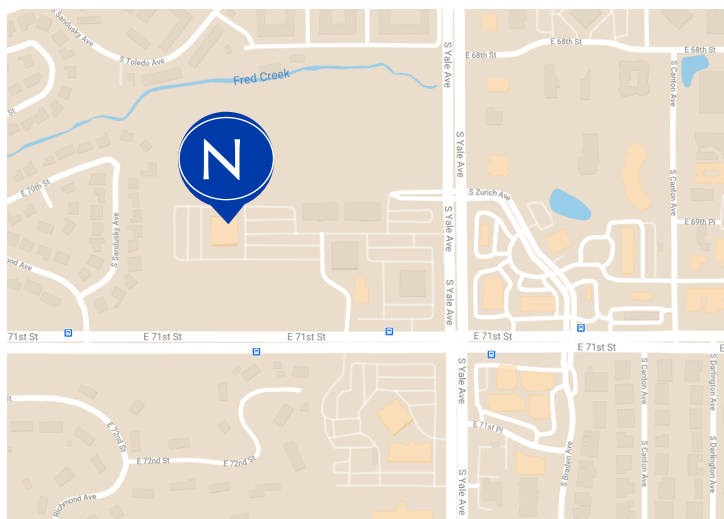
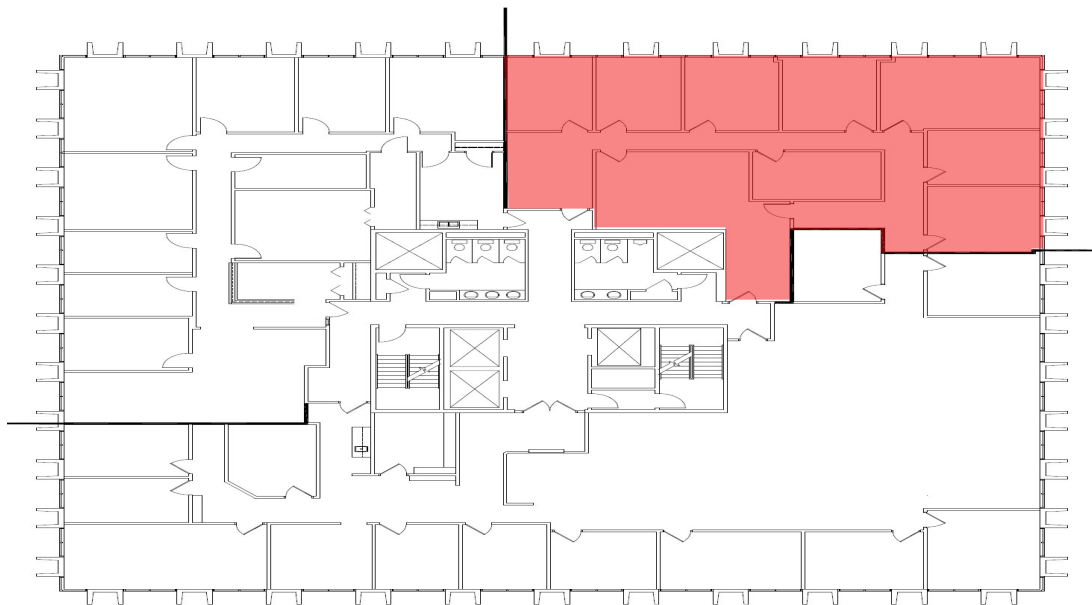
**DILON ARGO**

dargo@newmarkrp.com

C: 918.706.2946

**NEWMARK**  
ROBINSON PARK





## PROPERTY OVERVIEW

Copper Oaks is an office complex consisting of four buildings. One of south Tulsa's best locations with close proximity to restaurants, shopping, medical, and more.

## DETAILS

<b>Suite Number</b>	610
<b>Total RSF</b>	5,101
<b>Rental Rate</b>	\$16.50
<b>Lease Type</b>	Full Service
<b>Lease Term</b>	3 - 10 years

## HIGHLIGHTS

Recognizable and well-known location

Onsite management

Onsite engineers



for more information, visit us at  
**NEWMARKRP.COM**

The information contained herein was obtained from sources believed reliable; however, Newmark Robinson Park makes no guarantees, warranties or representations as to the completeness or accuracy thereof. The presentation of this property is submitted subject to errors.