

A tall, modern office building with a grid of windows and vertical concrete columns. The building is identified by a sign at the top as the Bank of Oklahoma Mortgage. It is surrounded by a parking lot, some trees, and a clear blue sky with light clouds.

 **BANK OF OKLAHOMA MORTGAGE**

# COPPER OAKS | FOR LEASE

7060 S YALE, TULSA, OK 74137

**DILON ARGO**

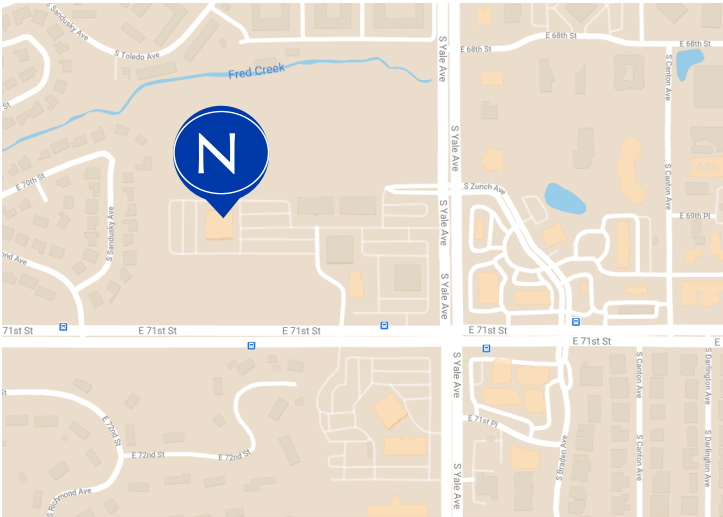
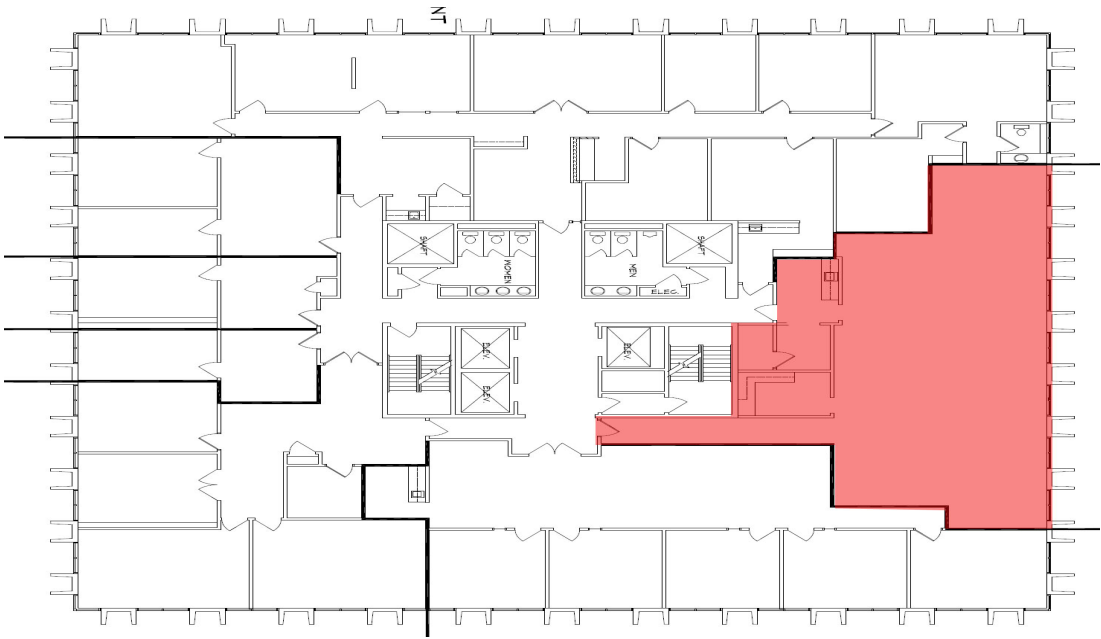
[dargo@newmarkrp.com](mailto:dargo@newmarkrp.com)

C: 918.706.2946

**NEWMARK**  
ROBINSON PARK



# COPPER OAKS



## PROPERTY OVERVIEW

Copper Oaks is an office complex consisting of four buildings. One of south Tulsa’s best locations with close proximity to restaurants, shopping, medical, and more.

## DETAILS

Suite Number	905
Total RSF	2,220
Rental Rate	\$16.50
Lease Type	Full Service
Lease Term	3 - 10 years

## HIGHLIGHTS

Recognizable and well-known location
Onsite management
Onsite engineers



for more information, visit us at  
**NEWMARKRP.COM**

The information contained herein was obtained from sources believed reliable; however, Newmark Robinson Park makes no guarantees, warranties or representations as to the completeness or accuracy thereof. The presentation of this property is submitted subject to errors,