



KELLY LAKES BUSINESS PARK | BUILDING FOR SALE OR LEASE

825 KELLY LAKES PASS, EDMOND, OK 73025

JIM ROSE

jrose@newmarkrp.com

O: 405.879.4767

NEWMARK
ROBINSON PARK

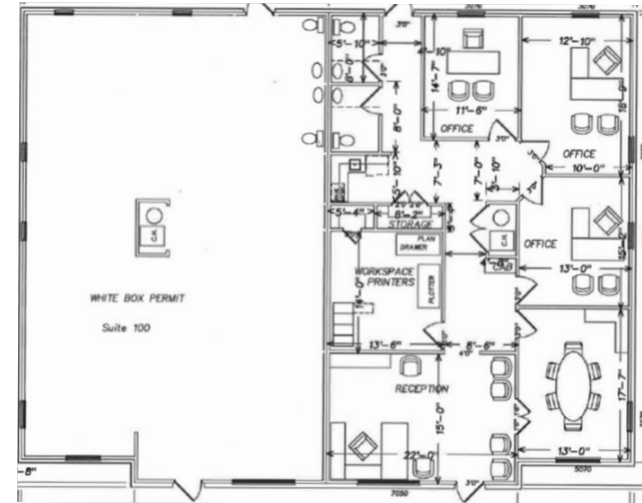
825 KELLY LAKES PASS / FOR SALE OR LEASE

PROPERTY OVERVIEW

Kelly Lakes Business Park is a new development located on Kelly Avenue between Coffee Creek Road and Sorghum Mill Road, I-35 is 4 miles east. The prestigious Oak Tree Country Club with a Pete Dye designed golf course is minutes away. Cross Timbers Elementary School is down the street while grocery, retail, restaurants and banks can be found at Covell Road and Kelley Avenue.



FLOOR PLAN



PROPERTY DETAILS

Size	3,827 SF
Suite 100	1,915 SF
Suite 150	1,910 SF
Lease Rate	\$18.50/SF NNN
Sale Price	\$650,000.00

PROPERTY HIGHLIGHTS

New construction
Ample drive up parking
Edmond Utilities
Near restaurants, retail, grocery
Access to I-35 & Hwy 74

AERIAL

