

W RENO AVENUE

S MORGAN RD

MULHOLLAND WAY

SOLD

SOLD

LOT 2
2.5 AC.

SOLD

MULHOLLAND & RENO INDUSTRIAL LOT | FOR SALE

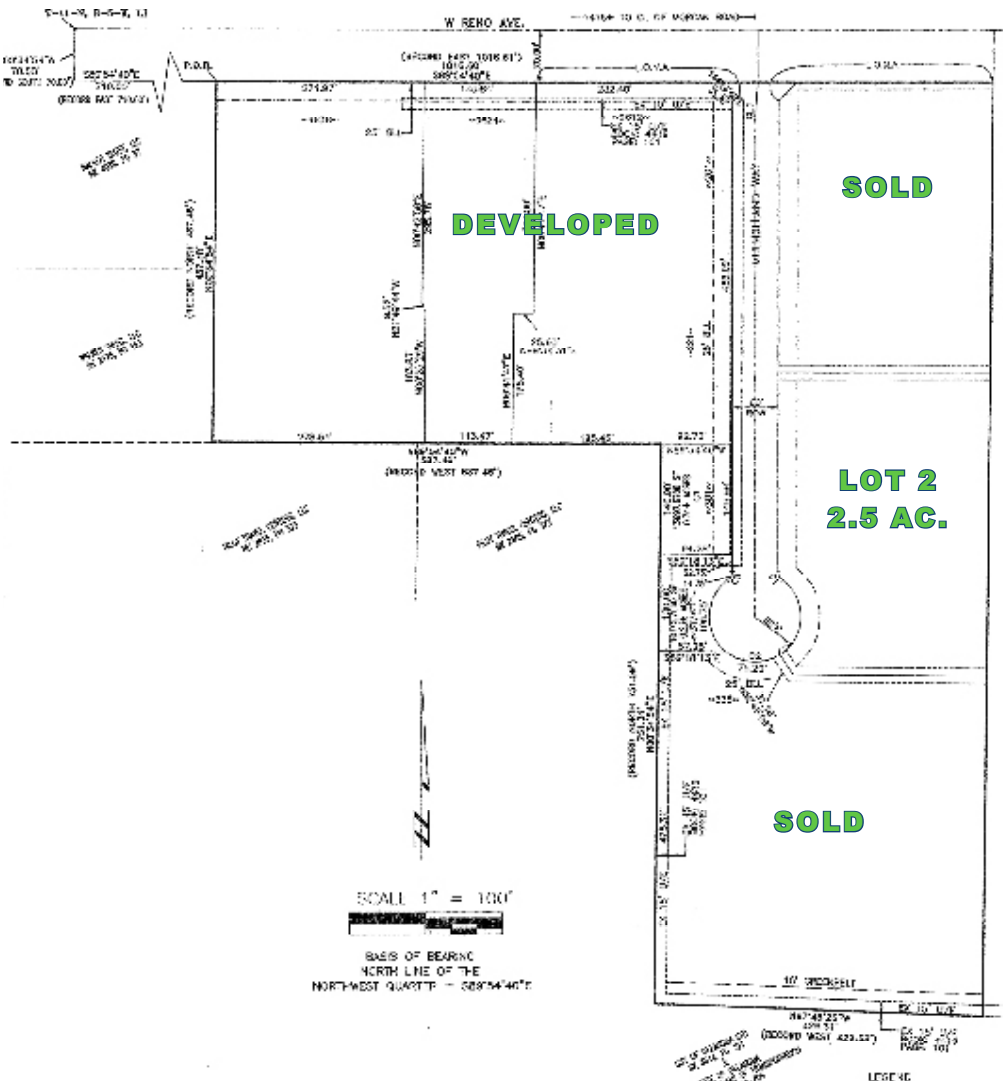
OKLAHOMA CITY, OK 73128



JIM KAREY
jkarey@newmarkrp.com
O: 405.879.4774

NEWMARK
ROBINSON PARK

MULHOLLAND & RENO INDUSTRIAL LOT | FOR SALE



PROPERTY OVERVIEW

Located on W Reno Avenue just east of Morgan Road, this development has an access road allowing easy ingress and egress.

The concept for this Planned Unit Development is to provide a mixed use development of industrial and commercial uses which will be compatible with the surrounding area. Industrial facilities are contemplated with the ability to also utilize the area for commercial and retail uses. The PUD is available for additional zoning regulation details.

DETAILS

Sale Price	\$499,000
Price/SF	\$4.58
Lot Size	Lot 2 - 2.5 Acres
Zoning	PUD - 757
Access	Reno & Mulholland Way

HIGHLIGHTS

- Great visibility from Reno & I-40
- Zoned PUD - 757, which allows moderate industrial and retail opportunities
- Access from Reno & Mulholland Way