



EASTPORT LAND | BUILD TO SUIT

17 ACRES±, OKLAHOMA CITY, OK

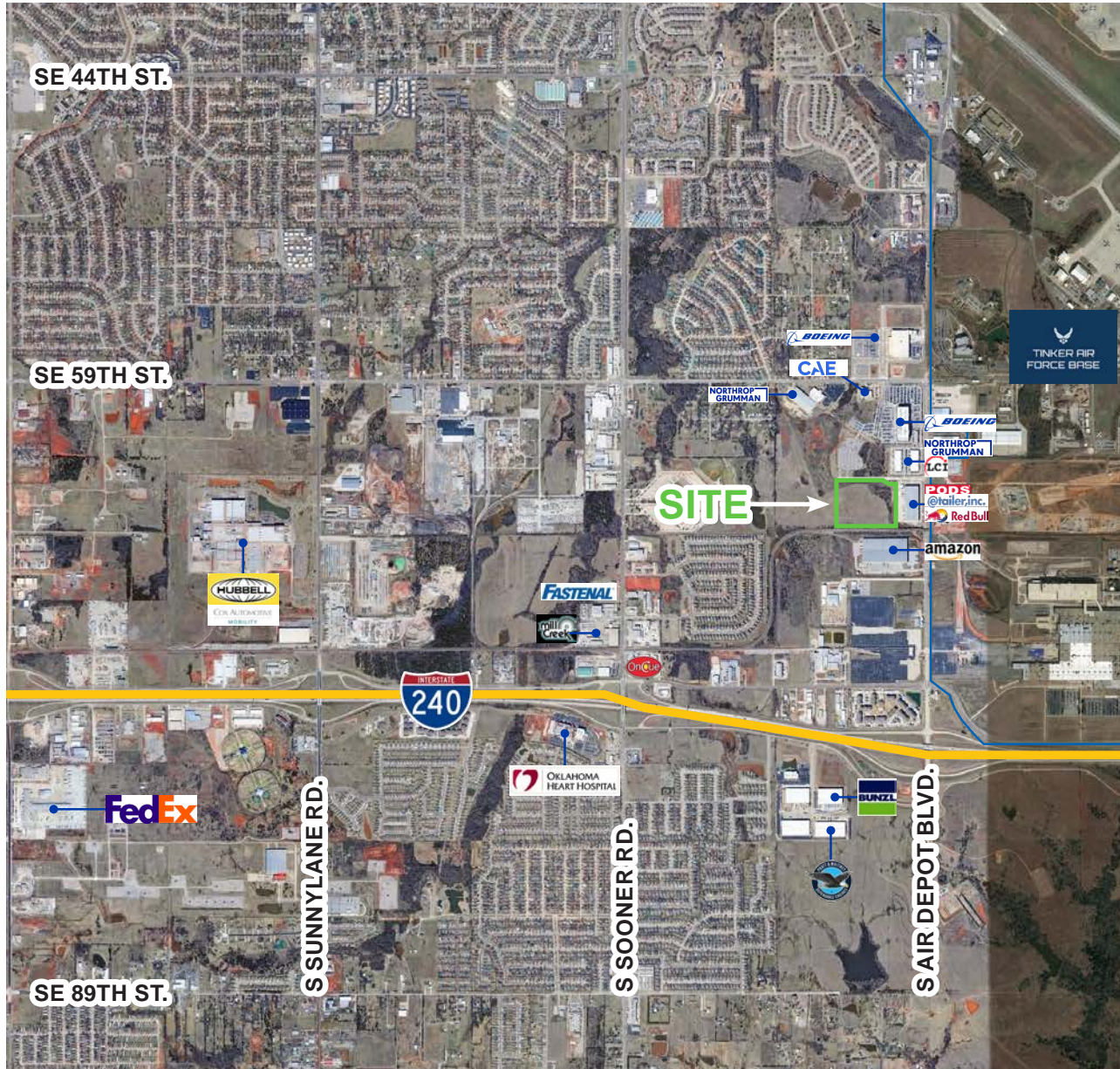
BRETT PRICE, CCIM, SIOR
bprice@newmarkrp.com
C: 405.613.8380

KRIS DAVIS, SIOR
kgdavis@newmarkrp.com
C: 405.202.9525

KARLEY HARPER
kharper@newmarkrp.com
C: 405.371.3498

NEWMARK
ROBINSON PARK

EASTPORT LAND | BUILD TO SUIT



DETAILS

Sale Price	Build to Suit
Lot Size	17 Acres±
Zoning	I-2
Market	Oklahoma City
Submarket	Southeast
Cross Streets	SE 59th & Air Depot

HIGHLIGHTS

- All utilities to site
- Industrial & office site plans available
- Access from S Air Depot
- New access drive from SE 59th St.

PROPERTY OVERVIEW

Eastport is located at the southwest corner of Tinker Air Force Base, which is the only semi truck access point for Tinker. Easy interstate access with I-240 located one mile to the south that links to I-35 which is three miles to the west, and I-40 which is 6 miles to the east. Neighboring tenants include Boeing, Northrop Grumman, Amazon, L3Harris and PODS.



204 N. Robinson, Ste 700 OKC, OK, 73102 | for more information, visit us at
110 W. 7th, Ste 2600 Tulsa, OK, 74119 | **NEWMARKRP.COM**

The information contained herein was obtained from sources believed reliable; however, Newmark Robinson Park makes no guarantees, warranties or representations as to the completeness or accuracy thereof. The presentation of this property is submitted subject to errors, omissions, change of price or conditions prior to sale or lease, or withdrawal without notice. Independently Owned and Operated.